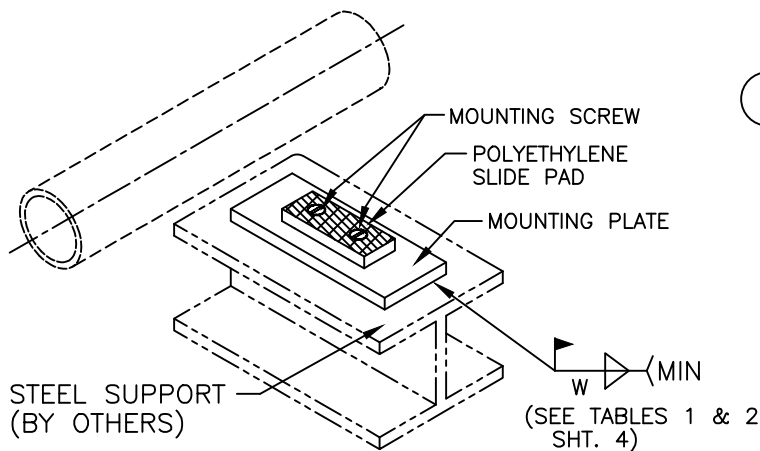
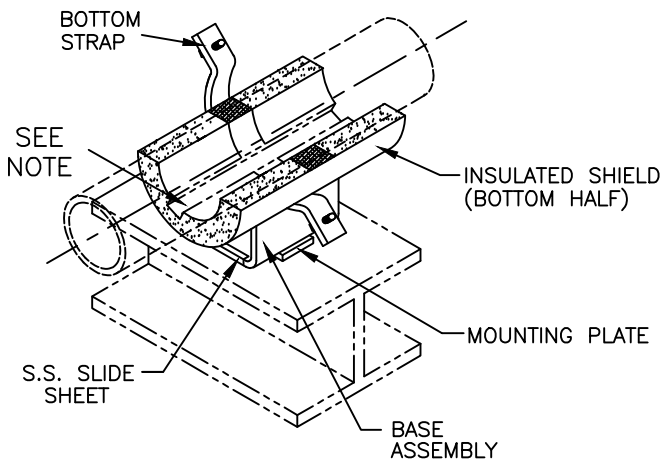




Pipe Shields, Inc.

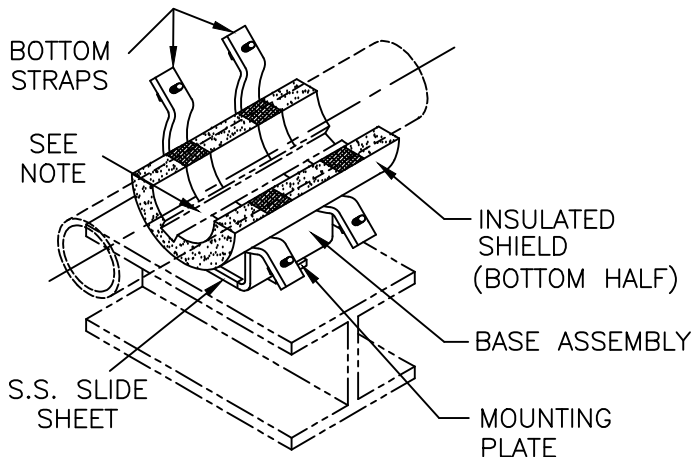


- 1 A) REMOVE THE MOUNTING SCREW FROM THE SLIDE PAD AND MOUNTING PLATE. B) TEMPORARILY SEPARATE THE SLIDE PAD FROM THE MOUNTING PLATE. C) LOCATE AND POSITION THE MOUNTING PLATE ON THE STEEL SUPPORT TO MEET THE REQUIRED PIPING ANALYSIS COLD SETTINGS (SEE SHEET 3, FOR P.S.I. RECOMMENDED COLD SETTINGS). PLEASE NOTE THAT REQUIRED PIPING ANALYSIS COLD SETTINGS GOVERNS OVER P.S.I. RECOMMENDATIONS). D) WHEN PROPERLY POSITIONED, WELD MOUNTING PLATE TO SUPPORT STEEL AS SHOWN. SELECT "W" (WELD SIZE) THAT CORRESPOND WITH THE PIPE SIZE AND MODEL DESIGNATION OF THE UNIT. E) PLACE SLIDE PAD ON MOUNTING PLATE AND INSTALL WITH THE MOUNTING SCREW.



- 2 POSITION BOTTOM HALF OF THE INSULATED SHIELD INTO THE BASE ASSEMBLY. ENSURE THAT THE INSERTS ARE PROPERLY LOCATED OVER THE STRAP(S) BY CHECKING THAT:
 - (A) EACH END OF SHIELD SHALL HAVE EQUAL DISTANCE (C) FROM OUTER EDGE OF STRAP (FIG. A & A1 SHT. 3).
 - (B) THE 180° SECTION OF THE BOTTOM HALF SHIELD SHALL BE PARALLEL TO THE SUPPORT BASE (FIG. B, SHT. 3).

MODEL: B1000-B1300



- 3 SLIDE THE BASE ASSEMBLY AND BOTTOM HALF SHIELD UNDER THE PIPE. POSITION THE BASE ASSEMBLY ON THE MOUNTING PLATE TO ALLOW FOR ANTICIPATED AXIAL AND LATERAL TRAVEL. (SEE SHEET 3 FOR P.S.I. RECOMMENDED AXIAL AND LATERAL COLD SETTINGS).

NOTE: WHEN MODELS INCLUDE HEAT TRACE GROVES, THE NUMBER AND LOCATION MAY VARY. CHECK WITH DESIGN DRAWINGS FOR EXACT NUMBER AND LOCATION. ENSURE THAT THE HEAT TRACING CABLE IS PROPERLY POSITIONED INSIDE THE GROVE OF THE SHIELD.

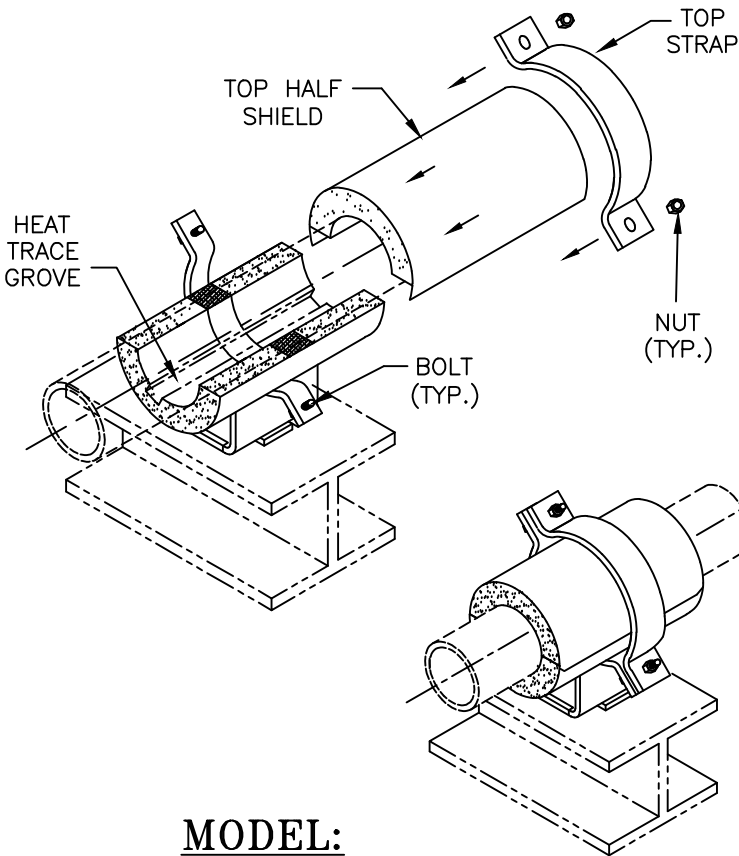
MODEL: B2000-B2300

MODEL: B1000-B2300 SERIES

SLIDING INSULATED PIPE SUPPORT INSTALLATION INSTRUCTIONS



Pipe Shields, Inc.



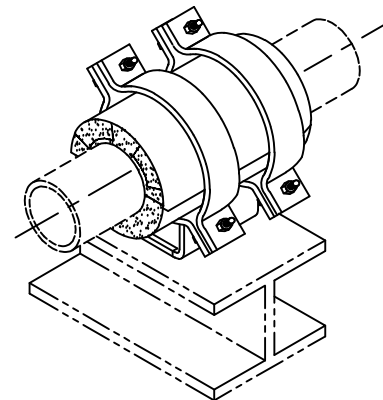
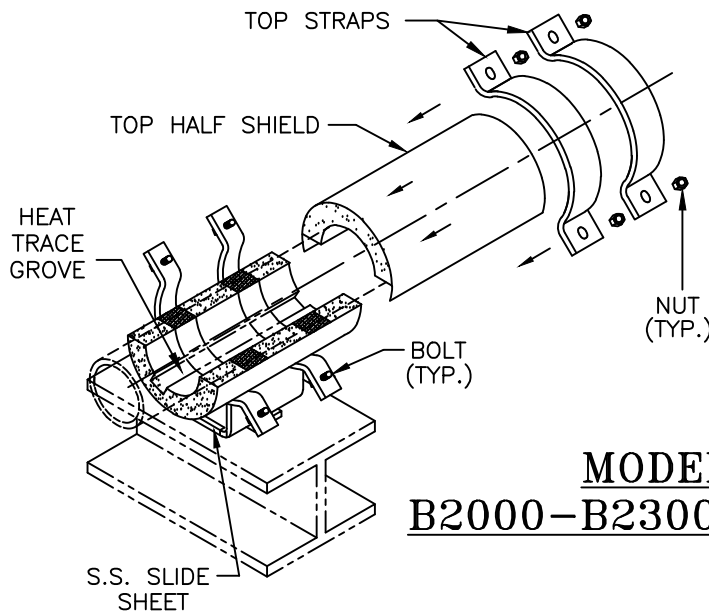
4 A) SLIDE THE TOP HALF SHIELD INTO POSITION ABOVE THE BOTTOM-HALF SHIELD. B) GENTLY PLACE THE TOP STRAPS INTO POSITION ABOVE THE BOTTOM STRAPS AND LINE-UP THE BOLT HOLES.

5 A) INSTALL THE BOLTS, LOCKWASHERS AND NUTS AND HAND TIGHTEN. FOR EASE OF BOLT TORQUING, INSTALL THE BOLTS WITH THE NUTS ON TOP. B) APPLY TORQUE ON THE BOLTS. SELECT TORQUE VALUE THAT CORRESPOND WITH THE PIPE SIZE AND MODEL DESIGNATION OF THE UNIT SHOWN ON TABLE 1 FOR B1000-B1300, TABLE 2 FOR B2000-B2300 SHEET 4. WHEN TIGHTENING, IT IS RECOMMENDED THAT THE NUT IS TURNED RATHER THAN THE BOLT HEAD AND THAT THE BOLTS ARE CROSS-TORQUED UNTIL THE REQ'D. TORQUE HAS BEEN ACHIEVED TO OBTAIN AN EVEN PRESSURE ON THE STRUCTURAL INSULATION. C) ENSURE THAT THE BOLTS ARE PROPERLY CROSS-TORQUED BY CHECKING THE SPACING "B" BETWEEN THE EARS TO BE APPROXIMATELY THE SAME. (SEE FIGURE B, SHEET 3).

NOTE:

THESE UNITS ARE DESIGNED FOR SPECIFIC AXIAL AND LATERAL TRAVEL. PRIOR TO TIGHTENING OF THE BOLTS, THE UNIT MAY REQUIRE COLD SETTING. SEE FIG. A-A1 & B (SHT. 3) FOR RECOMMENDED AXIAL & LATERAL COLD SETTING INSTRUCTION FOR THIS UNIT.

MODEL: B1000-B1300 SERIES COMPLETED ASSEMBLY



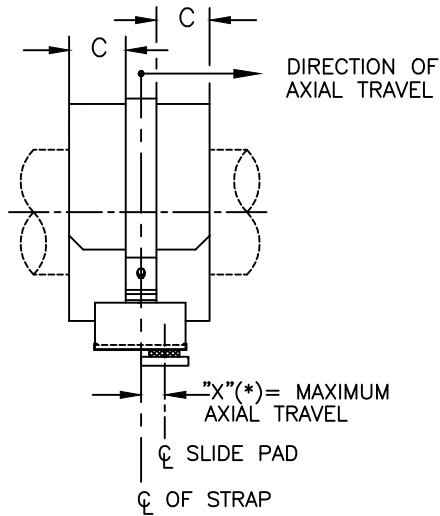
MODEL: B2000-B2300 SERIES COMPLETED ASSEMBLY

MODEL: B1000-B2300 SERIES SLIDING INSULATED PIPE SUPPORT INSTALLATION INSTRUCTIONS

RECOMMENDED AXIAL & LATERAL COLD SETTINGS

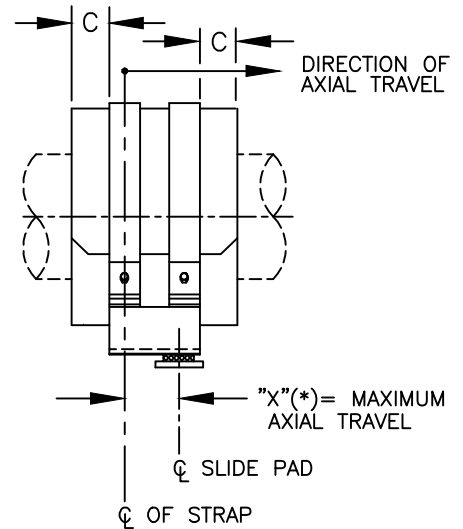
A) AXIAL COLD SETTING

* POSITION BASE ASSEMBLY SUCH THAT AFTER THE SUPPORT HAS MOVED, THE CENTER LINE OF THE STRAP (MARKED BY CENTER LINE) APPROXIMATELY MATCHES THE CENTER LINE OF THE SLIDE PAD.



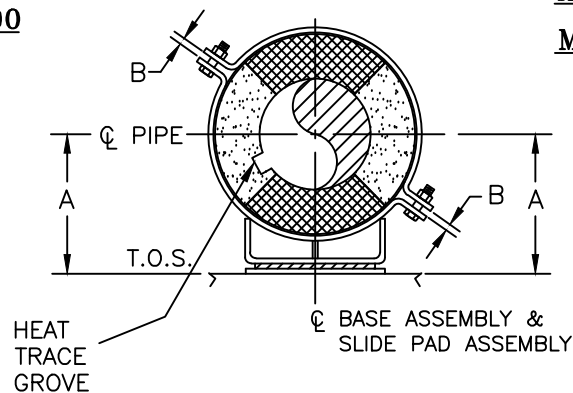
AXIAL COLD SETTING
MODEL B1000-B1300

FIGURE A



AXIAL COLD SETTING
MODEL B2000-B2300

FIGURE A1



LATERAL COLD SETTING

FIGURE B

B) LATERAL COLD SETTING

FOR LATERAL COLD SETTING, MATCH THE CENTER OF THE BASE ASSEMBLY OVER THE CENTER OF THE SLIDE PAD ASSEMBLY (FIG. B).

MODEL: B1000-B2300 SERIES SLIDING INSULATED PIPE SUPPORT INSTALLATION INSTRUCTIONS



Pipe Shields, Inc.

TABLE 1
BOLT TORQUE & WELD SIZE (W)

PIPE SIZE	B1000 SERIES		B1100 SERIES		B1200 SERIES		B1300 SERIES		SPECIAL		SPECIAL	
	BOLT TORQUE (FT-LBS)	WELD (W) SIZE	BOLT TORQUE (FT-LBS)	WELD (W) SIZE	BOLT TORQUE (FT-LBS)	WELD (W) SIZE	BOLT TORQUE (FT-LBS)	WELD (W) SIZE	BOLT TORQUE (FT-LBS)	WELD (W) SIZE	BOLT TORQUE (FT-LBS)	WELD (W) SIZE
.5"	3-5	3/16"	3-5	3/16"	3-5	3/16"	3-5	3/16"				
1"	3-5	3/16"	3-5	3/16"	3-5	3/16"	3-5	3/16"				
1.5"	3-5	3/16"	3-5	3/16"	3-5	3/16"	3-5	3/16"				
2"	3-5	3/16"	3-5	3/16"	3-5	3/16"	3-5	3/16"				
2.5"	3-5	3/16"	3-5	3/16"	3-5	3/16"	3-5	3/16"				
3"	3-5	3/16"	3-5	3/16"	3-5	3/16"	3-5	3/16"				
3.5"	3-5	3/16"	3-5	3/16"	8-10	3/16"	3-5	3/16"				
4"	4-6	3/16"	7-9	3/16"	10-12	3/16"	7-9	3/16"				
5"	4-6	3/16"	9-11	3/16"	13-15	3/16"	9-11	3/16"				
6"	7-9	1/4"	13-15	1/4"	20-22	1/4"	13-15	1/4"				
8"	9-11	1/4"	18-20	1/4"	27-29	1/4"	18-20	1/4"				
10"	10-12	1/4"	21-23	1/4"	31-33	1/4"	21-23	1/4"				
12"	11-13	1/4"	23-25	1/4"	34-36	1/4"	23-25	1/4"				
14"	13-15	1/4"	26-28	1/4"	39-41	1/4"	26-28	1/4"				
16"	18-20	1/4"	36-38	1/4"	54-56	1/4"	36-38	1/4"				
18"	20-22	1/4"	40-42	1/4"	60-62	1/4"	40-42	1/4"				
20"	21-23	1/4"	43-45	1/4"	64-66	1/4"	43-45	1/4"				
24"	23-25	1/4"	45-47	1/4"	68-70	1/4"	45-47	1/4"				
26"	20-25	1/4"	50-52	1/4"	75-77	1/4"	50-52	1/4"				
28"	27-29	1/4"	54-56	1/4"	81-83	1/4"	54-56	1/4"				
30"	39-41	1/4"	78-80	1/4"	118-120	1/4"	78-80	1/4"				
32"	41-43	1/4"	82-84	1/4"	123-125	1/4"	82-84	1/4"				
36"	46-48	1/4"	92-94	1/4"	*138-140	1/4"	92-94	1/4"				
42"	52-54	1/4"	103-105	1/4"	*155-160	1/4"	103-105	1/4"				
48"	58-60	1/4"	118-120	1/4"	*175-180	1/4"	118-120	1/4"				

* = REQUIRES A-325 BOLT MATERIAL

TABLE 2
BOLT TORQUE & WELD SIZE (W)

PIPE SIZE	B2000 SERIES		B2100 SERIES		B2200 SERIES		B2300 SERIES		SPECIAL		SPECIAL	
	BOLT TORQUE (FT-LBS)	WELD (W) SIZE	BOLT TORQUE (FT-LBS)	WELD (W) SIZE	BOLT TORQUE (FT-LBS)	WELD (W) SIZE	BOLT TORQUE (FT-LBS)	WELD (W) SIZE	BOLT TORQUE (FT-LBS)	WELD (W) SIZE	BOLT TORQUE (FT-LBS)	WELD (W) SIZE
1"	3-5	3/16"	3-5	3/16"	3-5	3/16"	3-5	3/16"				
1.5"	3-5	3/16"	3-5	3/16"	3-5	3/16"	3-5	3/16"				
2"	3-5	3/16"	3-5	3/16"	3-5	3/16"	3-5	3/16"				
2.5"	3-5	3/16"	3-5	3/16"	3-5	3/16"	3-5	3/16"				
3"	3-5	3/16"	3-5	3/16"	3-5	3/16"	3-5	3/16"				
3.5"	3-5	3/16"	3-5	3/16"	3-5	3/16"	3-5	3/16"				
4"	3-5	3/16"	3-5	3/16"	3-5	3/16"	3-5	3/16"				
5"	3-5	3/16"	3-5	3/16"	6-8	3/16"	3-5	3/16"				
6"	3-5	1/4"	7-9	1/4"	10-12	1/4"	7-9	1/4"				
8"	3-5	1/4"	9-11	1/4"	13-15	1/4"	9-11	1/4"				
10"	5-7	1/4"	10-12	1/4"	16-18	1/4"	10-12	1/4"				
12"	6-8	1/4"	11-13	1/4"	17-19	1/4"	11-13	1/4"				
14"	7-9	1/4"	13-15	1/4"	20-22	1/4"	13-15	1/4"				
16"	9-11	1/4"	18-20	1/4"	27-29	1/4"	18-20	1/4"				
18"	10-12	1/4"	20-22	1/4"	30-32	1/4"	20-22	1/4"				
20"	11-13	1/4"	21-23	1/4"	32-34	1/4"	21-23	1/4"				
24"	11-13	1/4"	23-25	1/4"	34-36	1/4"	23-25	1/4"				
26"	13-15	1/4"	25-27	1/4"	38-40	1/4"	25-27	1/4"				
28"	13-15	1/4"	27-29	1/4"	40-42	1/4"	27-29	1/4"				
30"	20-22	1/4"	39-41	1/4"	59-61	1/4"	39-41	1/4"				
32"	21-23	1/4"	41-43	1/4"	62-64	1/4"	41-43	1/4"				
36"	23-25	1/4"	46-48	1/4"	69-71	1/4"	46-48	1/4"				
42"	26-28	1/4"	52-54	1/4"	78-80	1/4"	52-54	1/4"				

MODEL: B1000-B2300 SERIES

SLIDING INSULATED PIPE SUPPORT

INSTALLATION INSTRUCTIONS