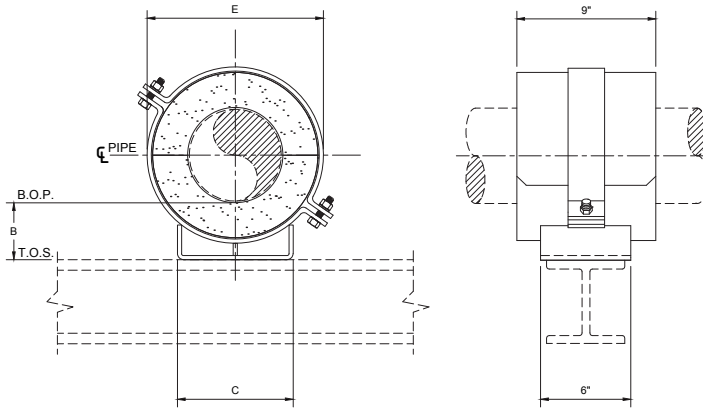
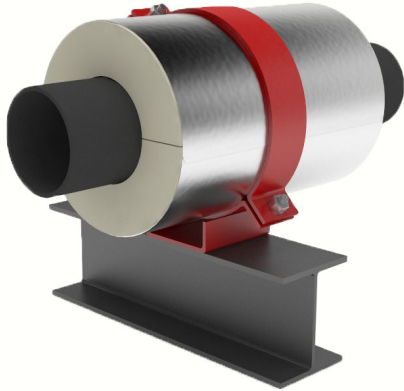


Model C3300 Insulated Friction Pipe Anchor



Contact factory for other dimensional, temperature, load, or axial travel requirements. Available in all insulation thickness.

The load ratings represent average values obtained in accordance with accepted test methods and are subject to normal manufacturing variations.

Dimensions and ratings are subject to change without notice.

Note: For higher load ratings, see: C4300.

Pipe Size	Load Rating			Insul. Thk. = 1"			Insul. Thk. = 1-1/2"			Insul. Thk. = 2"			Insul. Thk. = 2-1/2"			Insul. Thk. = 3"			Insul. Thk. = 4"			Insul. Thk. = 5"		
	Vert. Lbs	Lat. Lbs	Axial Lbs	B	C	E	B	C	E	B	C	E	B	C	E	B	C	E	B	C	E	B	C	E
1/2	550	275	110	4	1.5	3.375	4	2	4.5	4	2.5	5.5	4	4	7.125	6	4.5	8.125	6	6.5	10.125	8	8	12.25
3/4	700	350	140	4	1.5	3.375	4	2	4.5	4	2.5	5.5	4	4	7.125	6	4.5	8.125	6	6.5	10.125	8	8	12.25
1	900	450	180	4	2	4	4	2.5	5	4	3	6.062	4	4	7.125	6	4.5	8.125	6	6.5	10.125	8	8	12.25
1 1/2	1300	650	260	4	2	4.5	4	2.5	5.5	4	4	7.125	4	4.5	8.125	6	5.5	9.125	6	7.5	11.25	8	9	13.25
2	1500	750	300	4	2.5	5	4	3	6.0625	4	4	7.125	4	4.5	8.125	6	5.5	9.125	6	7.5	11.25	8	9	13.25
2 1/2	1800	900	360	4	2.5	5.5	4	4	7.125	4	4.5	8.125	4	5.5	9.125	6	6.5	10.125	6	8	12.375	8	9.5	14.625
3	2100	1050	420	4	3	6.187	4	4	7.125	4	4.5	8.125	4	5.5	9.125	6	6.5	10.125	6	8	12.375	8	9.5	14.625
4	3350	1675	670	4	4	7.25	4	4.5	8.25	4	5.5	9.25	4	6.5	10.25	6	7.5	11.375	6	9	13.375	8	10.5	15.625
5	4200	2100	840	4	4.5	8.5	4	5.5	9.5	4	6.5	10.5	4	7.5	11.625	6	8	12.625	6	9.5	14.875	8	11	16.875
6	5100	2550	1020	4	5.5	9.5	4	6.5	10.5	4	7.5	11.625	4	8	12.625	6	9	13.625	6	10.5	15.875	8	12	17.875
8	6800	3400	1360	4	7.5	11.625	4	8	12.625	4	9	13.625	6	9.5	14.875	6	10.5	15.875	6	12	18.125	8	13	20.125
10	8000	4000	1600	4	9	13.875	4	9.5	15.125	4	10.5	16.125	6	11	17.125	6	12	18.125	6	13	20.125	8	14.5	22.125
12	8800	4400	1760	4	10.5	16.125	4	11	17.125	4	12	18.125	6	12.5	19.125	6	13	20.125	6	14.5	22.125	8	16	24.125
14	10000	5000	2000	4	11	17.125	4	12	18.125	4	12.5	19.125	6	13	20.125	6	14	21.125	6	15.5	23.125	8	16.5	25.125
16	11600	5800	2320	4	12.5	19.375	4	13	20.375	6	14	21.375	6	14.5	22.375	6	15.5	23.375	8	16.5	25.375	8	18	27.375
18	12800	6400	2560	4	14	21.375	4	14.5	22.375	6	15.5	23.375	6	16	24.375	6	16.5	25.375	8	18	27.375	8	19.5	29.375
20	13600	6800	2720	4	15.5	23.375	4	16	24.375	6	16.5	25.375	6	17.5	26.375	6	18	27.375	8	19.5	29.375	8	21	31.375
24	14400	7200	2880	4	18	27.375	4	19	28.375	6	19.5	29.375	6	20.5	30.375	6	21	31.375	8	22.5	33.375	8	24	35.375
30	18800	9400	3760	4	22.5	33.625	6	23	34.625	6	24	35.625	6	24.5	36.625	6	25	37.625	8	26.5	39.625	8	28	41.625
36	22000	11000	4400	4	26.5	40.125	6	27.5	41.125	6	28	42.125	6	28.5	43.125	6	29.5	44.125	8	31	46.125	8	32.5	48.125
42	24800	12400	4960	4	31	46.125	6	31.5	47.125	6	32.5	48.125	6	33	49.125	6	33.5	50.125	8	35	52.125	8	36.5	54.125

Application:

Model C3300 is designed for use on:

- Hot water
- Steam
- Cold water
- Air
- Chilled water
- Gas
- Dual temperature
- Vacuum
- Where thermal cycle are infrequent
- Where axial forces are relatively light or in balance

Intended for installation on:

- Flat Surfaces

Temperature Range:

Standard: +40°F to +1200°F CalSil Insulation

Note: Up to 1800°F available upon request.

Cryogenic: -275°F to +275°F Urethane Insulation.

Add U after the model number (i.e., C3300U)

Features:

- All pipe sizes
- Easy installation
- Eliminates welding to pipe
- Overlapping galvanized sheet metal jacket
- Insulating structural inserts for load transfer
- Other I.D.'s and/or O.D.'s available on request
- Bottom-of-pipe to top-of-shield matches insulated supports in "B" series

Performance test results on file:

Available upon request.

Material Data:

- C3300:** Applicable PSI spec. doc.: No. 209.
- Insulation:** Calcium silicate asbestos-free, treated with water repellent.
- Jackets:** Galvanized steel ASTM A-653.
- Glue:** Industrial contact adhesive
- Structural Inserts:** High-density calcium silicate asbestos-free, treated with water repellent.
- Steel Straps/Base:** Carbon Steel ASTM A-36.
- Fasteners:** ASTM A-307 plated.
- Coating:** Primer coated or hot dipped galvanized. Other coatings available upon request.

Formal submittal sheets available