

- 1 A) POSITION THE BOTTOM HALF OF THE INSULATED HANGER SHIELD (INSULATING STRUCTURAL MATERIAL AND SHEET METAL JACKET) ON THE PIPE AT THE DESIRED LOCATION. B) ENSURE THAT THE HEAT TRACING CABLE IS PROPERLY POSITIONED INSIDE THE HEAT TRACE GROOVE OF THE TOP (AND BOTTOM) HALF SHIELD. C) ENSURE THAT THE BOTTOM HALF SHIELD IS LOCATED UNDER THE PIPE AS SHOWN BELOW (FIGURE A)

NOTE:
NUMBER AND LOCATION OF HEAT TRACE GROOVES MAY VARY.

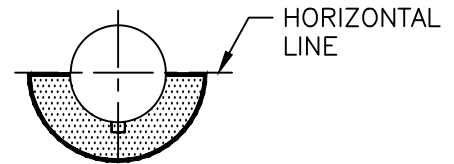
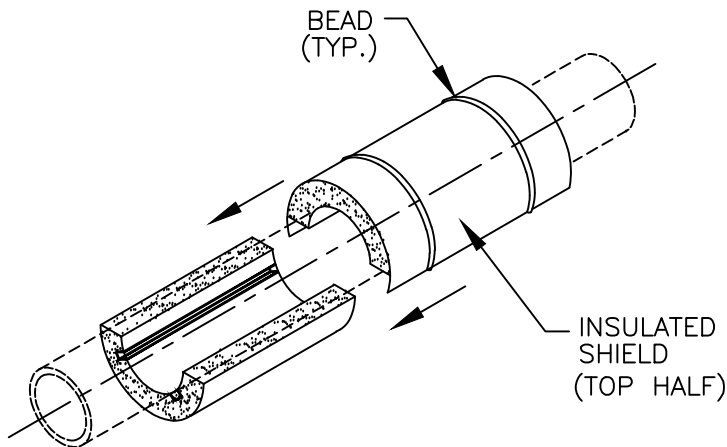


FIGURE A



- 2 GENTLY SLIDE INTO POSITION THE TOP HALF OF THE INSULATED HANGER SHIELD OVER THE BOTTOM HALF SHIELD AS SHOWN.

MODEL: D4000-D5000 SERIES
INSULATED 2 ROD HANGER
INSTALLATION INSTRUCTIONS

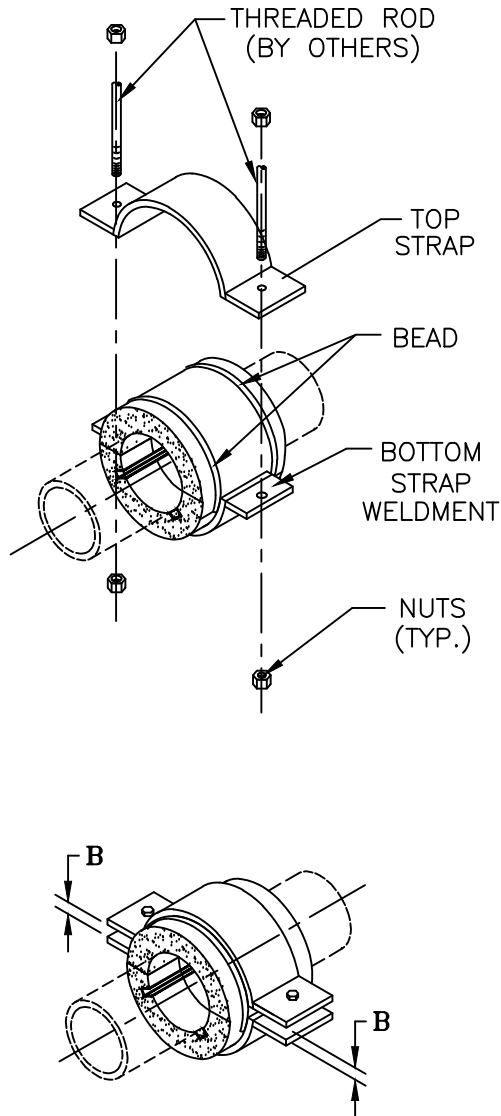


FIGURE B

- 3** A) POSITION STRAPS BETWEEN THE BEADS. B) INSTALL THE THREADED ROD (BY OTHERS) LOCKWASHERS AND NUTS AND HAND TIGHTEN. C) APPLY TORQUE ON THE BOLTS. D) SELECT TORQUE VALUE THAT CORRESPOND WITH THE PIPE SIZE AND MODEL DESIGNATION OF THE UNIT AS SHOWN ON TABLE 1, BELOW. WHEN TIGHTENING, IT IS RECOMMENDED THAT THE BOLTS ARE CROSS-TORQUED UNTIL THE REQUIRED TORQUE HAS BEEN ACHIEVED TO OBTAIN AN EVEN PRESSURE ON THE STRUCTURAL INSULATION E) ENSURE THAT THE BOLTS ARE PROPERLY CROSS-TORQUED BY CHECKING THE SPACING "B" BETWEEN THE EARS TO BE APPROXIMATELY THE SAME, SEE FIGURE B.

	D4000	D5000
PIPE SIZE	BOLT TORQUE (FT-LBS)	BOLT TORQUE (FT-LBS)
1/2	1-3	1-3
3/4	1-3	1-3
1	1-3	1-3
1 1/4	1-3	1-3
1 1/2	1-3	1-3
2	2-4	2-4
2 1/2	2-4	2-4
3	3-5	3-5
3 1/2	3-5	3-5
4	3-5	3-5

MODEL: D4000-D5000 SERIES
INSULATED 2 ROD HANGER
INSTALLATION INSTRUCTIONS