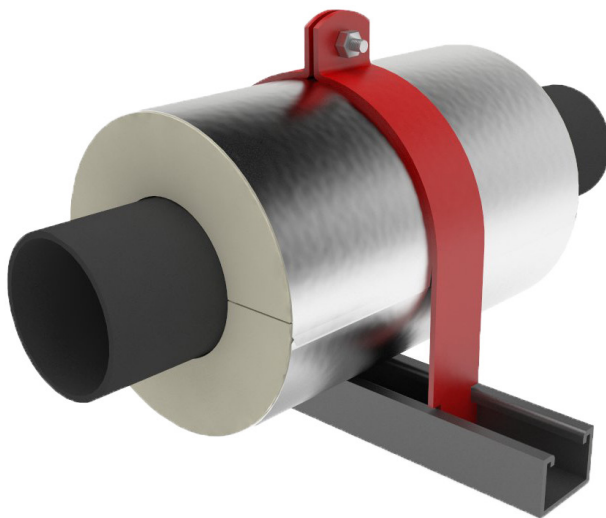


\*PSI A-Series Model purchased separately



Pipe Size	Maximum Lateral Load - Lbs
3/4	50
1	50
1-1/4	50
1-1/2	50
2	50
2-1/2	50
3	50
3-1/2	50
4	50
5	50
6	50
8	50
10	50
12	50

TABLE I

Insulation Thicknesses
0
1/2
3/4
1
1-1/2
2
2-1/2
3
3-1/2
4

TABLE II

Contact factory for pipe sizes or insulation thicknesses not shown.

Note: For neoprene lined clamps, see: G1200; For bolt-on clamps, see: G2000; For U-bolts, see: G3000.

Insulation and Framing Channel sold separately.

## Application:

Model G1000 is designed for use on:

- Hot Water
- Cold Water
- Chilled Water
- Dual Temperature
- Steam
- Air
- Gas
- Vacuum

Intended for installation on:

- Standard 1-5/8" width framing channels

## Features:

- Easy installation
- Rugged
- Fits standard 1-5/8" width framing channel
- Sized to clamp on O.D. of bare pipe
- Sized to clamp on O.D. of insulated pipe support models A1000 through A7400
- Complete with top bolt and nut
- Other sizes available on request

## Material Data:

- **G1000:** Applicable PSI specification document: No. 208.
- **Steel A:** Galvanized steel 11 ga. X 1-1/4 wide ASTM A-653
- **Fasteners:** ASTM A-307 Plated.

Formal submittal sheets available