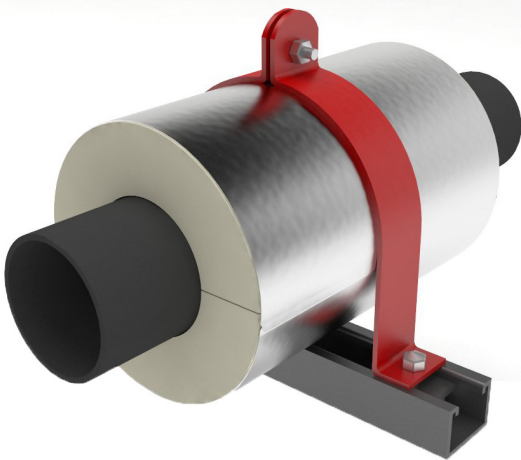


\*PSI A-Series Model purchased separately



Pipe Size	Maximum Lateral Load - Lbs.
3/4	200
1	200
1-1/4	200
1-1/2	200
2	400
2-1/2	400
3	400
3-1/2	400
4	400
5	400
6	400
8	400
10	400
12	400

TABLE I

Insulation Thicknesses
0
1/2
3/4
1
1-1/2
2
2-1/2
3
3-1/2
4

TABLE II

Contact factory for pipe sizes or insulation thicknesses not shown.

Note: For neoprene lined straps, see: G2200; For pipe/shield clamps, see: G1000; For U-bolts, see: G3000.

Insulation and Framing Channel sold separately.

### Application:

Model G2000 is designed for use on:

- Hot Water
- Cold Water
- Chilled Water
- Dual Temperature
- Steam
- Air
- Gas
- Vacuum

Intended for installation on:

- Standard 1-5/8" width Framing Channels

### Features:

- Easy installation
- Rugged
- Bolts to standard 1-5/8" width framing channel
- Sized to clamp on O.D. of bare pipe
- Sized to provide approximately 1/16" radial clearance around O.D. of insulated pipe support models A1000 through A7400
- Complete with top bolt and nut plus two (2) tie down bolts and channel nuts with springs
- Other sizes available on request

### Material Data:

- **G2000:** Applicable PSI specification document: No. 208.
- **Steel A:** ASTM A-36 1/4 X 1-1/2
- **Fasteners:** ASTM A-307 Plated.
- **Coating:** Primer coating or hot dipped galvanized. Other coatings available upon request.

Formal submittal sheets available